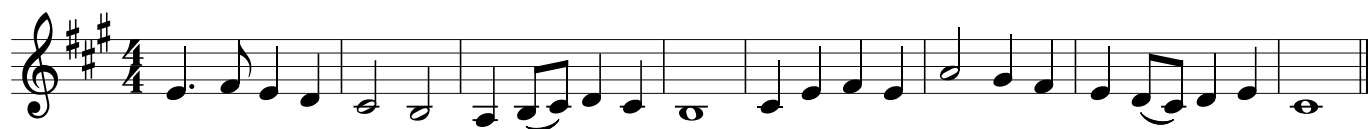


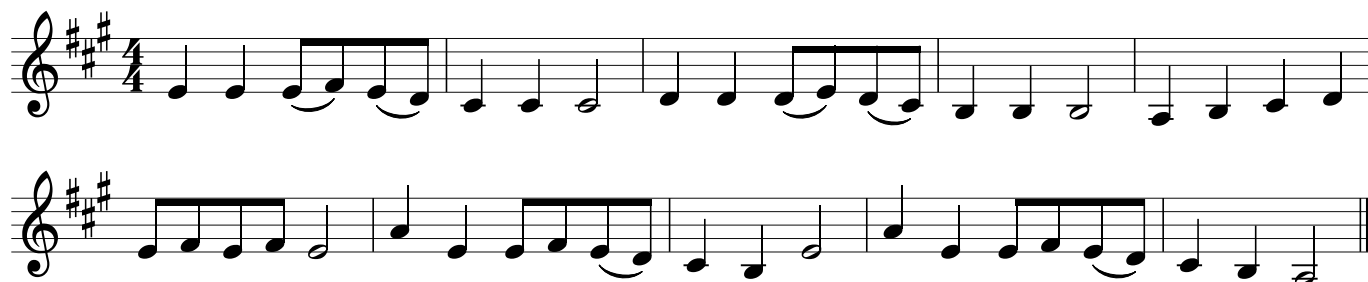
Alle Jahre wieder



Morgen kommt der Weihnachtsmann



Lasst uns froh und munter sein



Ihr Kinderlein kommet



O du fröhliche



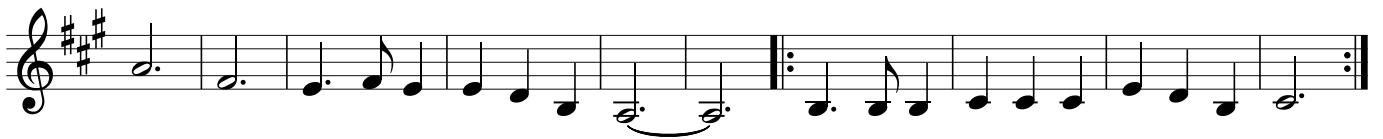
Schneeflöckchen, Weißröckchen



Morgen, Kinder, wird's was geben



Süßer die Glocken nie klingen



Stille Nacht



Stille, stille



Leise rieselt der Schnee

Two staves of musical notation for the piece 'Leise rieselt der Schnee'. The key signature is one sharp (F#) and the time signature is 3/4. The melody is written in treble clef. The first staff contains the first 12 measures, and the second staff contains the next 12 measures, ending with a double bar line.

Fröhliche Weihnacht

Three staves of musical notation for the piece 'Fröhliche Weihnacht'. The key signature is one sharp (F#) and the time signature is 4/4. The melody is written in treble clef. The first two staves contain the main melody, and the third staff contains a repeat section with two endings, labeled '1.' and '2.', ending with a double bar line.

Zu Bethlehem geboren

Two staves of musical notation for the piece 'Zu Bethlehem geboren'. The key signature is one sharp (F#) and the time signature is 4/4. The melody is written in treble clef. The first staff contains the first 12 measures, and the second staff contains the next 12 measures, ending with a double bar line.

Les Anges dans nos Campagnes

Two staves of musical notation for the piece 'Les Anges dans nos Campagnes'. The key signature is one sharp (F#) and the time signature is 4/4. The melody is written in treble clef. The first staff contains the first 12 measures, and the second staff contains the next 12 measures, including a repeat section with two endings, labeled '1.' and '2.', ending with a double bar line.

O Tannenbaum

Musical notation for 'O Tannenbaum' in E major, 3/4 time. The first staff ends with a double bar line and the word 'Fine'. The second staff begins with a double bar line and the instruction 'Da capo al Fine'.

Kling Glöckchen

Musical notation for 'Kling Glöckchen' in E major, 4/4 time. The first staff ends with a double bar line and the word 'Fine'. The second staff begins with a double bar line and the instruction 'Da capo al Fine'.

Kommet ihr Hirten

Musical notation for 'Kommet ihr Hirten' in E major, 3/4 time. The first staff ends with a double bar line and repeat dots. The second staff begins with a double bar line and repeat dots.

Es ist ein Ros' entsprungen

Musical notation for 'Es ist ein Ros' entsprungen' in E major, 4/4 time. The first staff ends with a double bar line and the word 'Fine'. The second staff begins with a double bar line and the instruction 'Da capo al Fine'.

Vom Himmel hoch

Musical notation for 'Vom Himmel hoch' in E major, 4/4 time. The first staff ends with a double bar line. The second staff begins with a double bar line.

Go tell it on the Mountain

Musical score for 'Go tell it on the Mountain' in E major, 4/4 time. The score consists of three staves. The first staff contains the main melody. The second staff includes a 'Fine' marking. The third staff includes a 'Da capo al Fine' marking.

We wish you a merry Christmas

Musical score for 'We wish you a merry Christmas' in E major, 3/4 time. The score consists of two staves. The first staff contains the main melody. The second staff includes a 'Fine' marking and a 'Da Capo al Fine' marking.

Jingle Bells

Musical score for 'Jingle Bells' in E major, 4/4 time. The score consists of four staves. The first staff contains the main melody. The second and fourth staves include first and second endings, with a 'Fine' marking at the end of the second ending. The third staff includes a repeat sign. The fourth staff includes a 'Da capo al Fine' marking.

Zum Begleiten beachte bitte die Hinweise im Buch. So können beispielsweise einige Lieder gut mit Terzen begleitet werden.