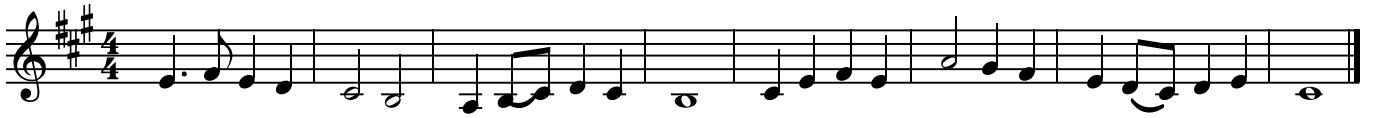


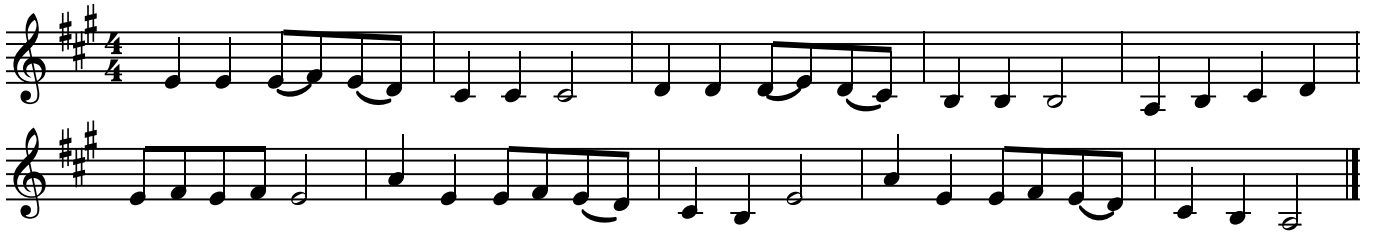
Alle Jahre wieder



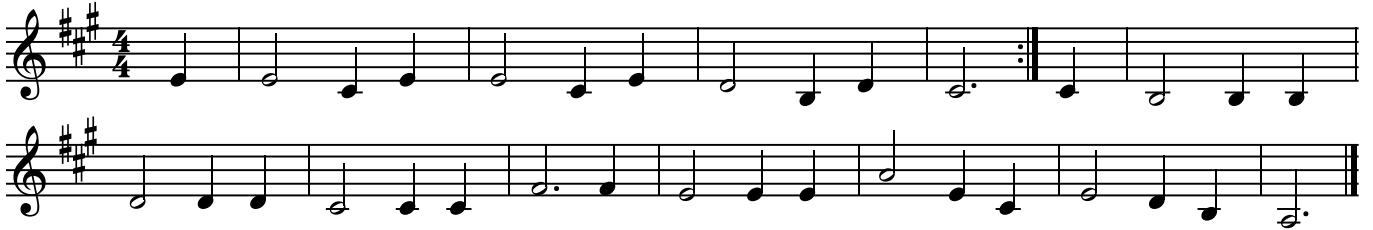
Morgen kommt der Weihnachtsmann



Lasst uns froh und munter sein



Ihr Kinderlein kommet



O du fröhliche



Schneeflöckchen, Weißröckchen



Morgen, Kinder, wird's was geben



Süßer die Glocken nie klingen

Es

Musical score for 'Süßer die Glocken nie klingen' in G major, 3/4 time. It consists of three staves of music. The first staff begins with a treble clef, a key signature of two sharps (F# and C#), and a 3/4 time signature. The melody is written in a simple, folk-like style with quarter and eighth notes. The second and third staves continue the melody, with the second staff featuring a repeat sign and a double bar line.

Stille Nacht

Musical score for 'Stille Nacht' in G major, 3/4 time. It consists of two staves of music. The first staff begins with a treble clef, a key signature of two sharps, and a 3/4 time signature. The melody is written in a simple, folk-like style with quarter and eighth notes. The second staff continues the melody, with a repeat sign and a double bar line.

Stille, stille

Musical score for 'Stille, stille' in G major, 4/4 time. It consists of one staff of music. The first part of the score ends with a double bar line and the word 'Fine'. The second part of the score begins with a repeat sign and ends with a double bar line and the words 'Da capo al Fine'.

Leise rieselt der Schnee

Musical score for 'Leise rieselt der Schnee' in G major, 3/4 time. It consists of two staves of music. The first staff begins with a treble clef, a key signature of two sharps, and a 3/4 time signature. The melody is written in a simple, folk-like style with quarter and eighth notes. The second staff continues the melody, with a repeat sign and a double bar line.

Fröhliche Weihnacht

Musical score for 'Fröhliche Weihnacht' in G major, 4/4 time. It consists of three staves of music. The first two staves begin with a treble clef, a key signature of two sharps, and a 4/4 time signature. The melody is written in a simple, folk-like style with quarter and eighth notes. The third staff continues the melody, with a repeat sign and a double bar line, and includes first and second endings marked '1.' and '2.'.

Zu Bethlehem geboren

Musical score for 'Zu Bethlehem geboren' in G major, 4/4 time. It consists of two staves of music. The first staff begins with a treble clef, a key signature of two sharps, and a 4/4 time signature. The melody is written in a simple, folk-like style with quarter and eighth notes. The second staff continues the melody, with a repeat sign and a double bar line.

Les Anges dans nos Campagnes

Es

Musical score for 'Les Anges dans nos Campagnes' in G major, 4/4 time. It consists of two staves. The first staff contains the main melody with a repeat sign and a first ending. The second staff contains the accompaniment, also with a repeat sign and a first ending. The piece concludes with a second ending.

O Tannenbaum

Musical score for 'O Tannenbaum' in G major, 3/4 time. It consists of two staves. The first staff contains the melody, and the second staff contains the accompaniment. The piece ends with the instruction 'Fine' and 'Da capo al Fine'.

Kling Glöckchen

Musical score for 'Kling Glöckchen' in G major, 4/4 time. It consists of two staves. The first staff contains the melody, and the second staff contains the accompaniment. The piece ends with the instruction 'Fine' and 'Da capo al Fine'.

Kommet ihr Hirten

Musical score for 'Kommet ihr Hirten' in G major, 3/4 time. It consists of two staves. The first staff contains the melody, and the second staff contains the accompaniment. The piece ends with a double bar line.

Es ist ein Ros entsprungen

Musical score for 'Es ist ein Ros entsprungen' in G major, 4/4 time. It consists of two staves. The first staff contains the melody, and the second staff contains the accompaniment. The piece ends with the instruction 'Fine' and 'Da capo al Fine'.

Vom Himmel hoch

Musical score for 'Vom Himmel hoch' in G major, 4/4 time. It consists of two staves. The first staff contains the melody, and the second staff contains the accompaniment. The piece ends with a double bar line.

Go tell it on the Mountain

Musical score for "Go tell it on the Mountain" in G major, 4/4 time. The score consists of three staves. The first staff contains the main melody. The second staff contains a bass line with a "Fine" marking at the end of the first measure. The third staff contains a bass line with a "Da capo al Fine" marking at the end of the piece.

We wish you a merry Christmas

Musical score for "We wish you a merry Christmas" in G major, 3/4 time. The score consists of two staves. The first staff contains the main melody. The second staff contains a bass line with a "Fine" marking at the end of the first measure and a "Da Capo al Fine" marking at the end of the piece.

Jingle Bells

Musical score for "Jingle Bells" in G major, 4/4 time. The score consists of four staves. The first staff contains the main melody. The second staff contains a bass line with first and second endings, marked "1." and "2.", and a "Fine" marking at the end of the second ending. The third staff contains a bass line with first and second endings, marked "1." and "2.". The fourth staff contains a bass line with first and second endings, marked "1." and "2.", and a "Da capo al Fine" marking at the end of the piece.

ISBN 978-3-944758-01-5